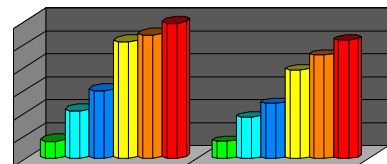
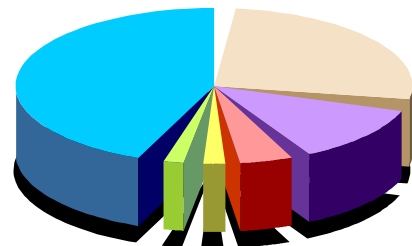
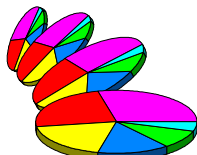
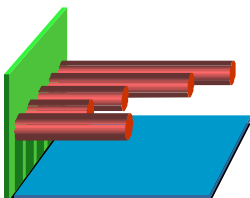
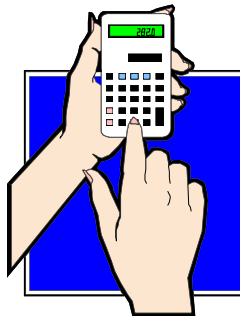
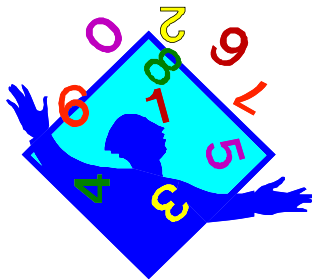


# I.G.C.S.E. Mathematics

## (Cambridge Board)

### The aim of the mathematics teaching at the BSL is to :

- Enable each pupil to develop, within their capacities, the mathematical skills and understanding required for adult life, for employment and for further study and training, while remaining aware of the difficulties which some pupils will experience in trying to gain such an appropriate understanding;
- Provide each pupil with such mathematics as may be needed for their study of other subjects;
- Help each pupil to develop 'mathematical thinking';
- Help each pupil to develop so far as possible their appreciation of and enjoyment of mathematics itself and their realisation of the role which it has played and will continue to play both in the development of science and technology and of our civilisation;
- Make each pupil aware that mathematics provides them with a powerful means of communication.



### What's involved?

#### *The International GCSE*

The school uses the Cambridge Board for external examinations at GCSE, following the Programmes of Study and using the set texts as recommended.

Candidates will follow either a **Core Curriculum** where pass grades C to G are possible, or the **Extended Curriculum** where a candidate can achieve pass grades A\* to G.

The **Extended curriculum** consists of two 2-hour exams and the **Core Curriculum** has two 1-½ hour exams.

Neither Curriculum involves coursework.

Each Paper will consist of 10-12 questions, with no choice of question.

It is assumed each candidate will be in possession of a scientific calculator for both exams.